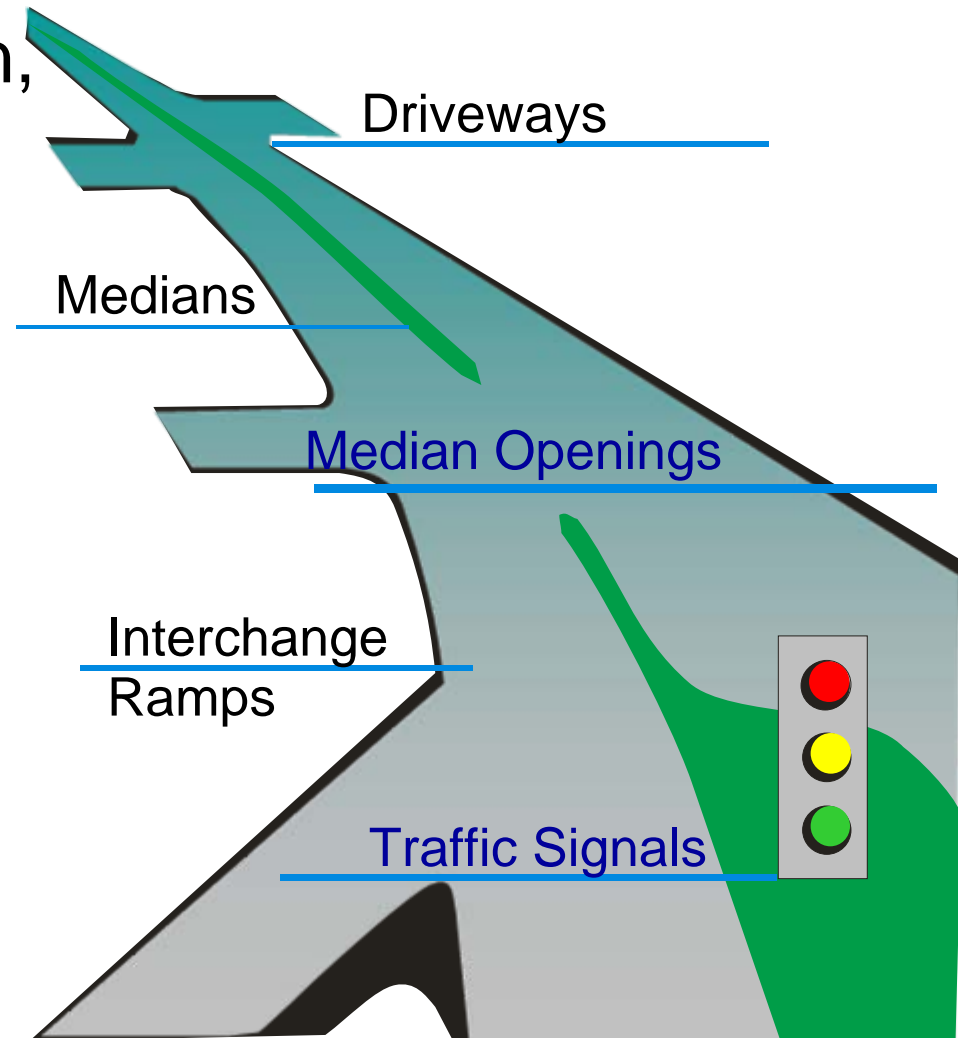


# What is Access Management?

The control and regulation of the spacing, location, and design of:





What are the  
Benefits of

# Access Management ?



## Safety

Fewer / less severe accidents  
Less auto / pedestrian conflict



## Efficiency

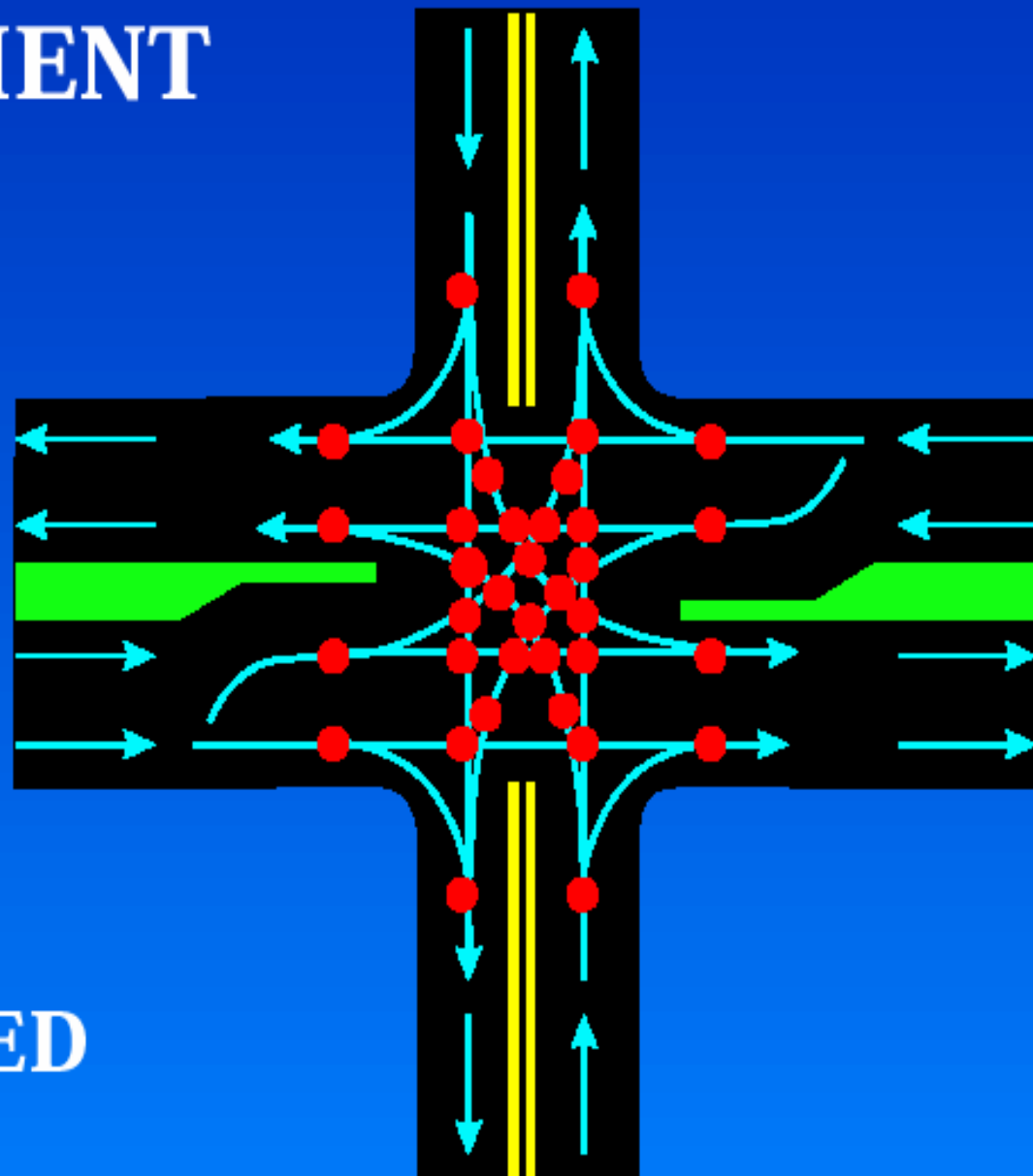
Higher levels of service  
Less stop and go traffic



## Aesthetics

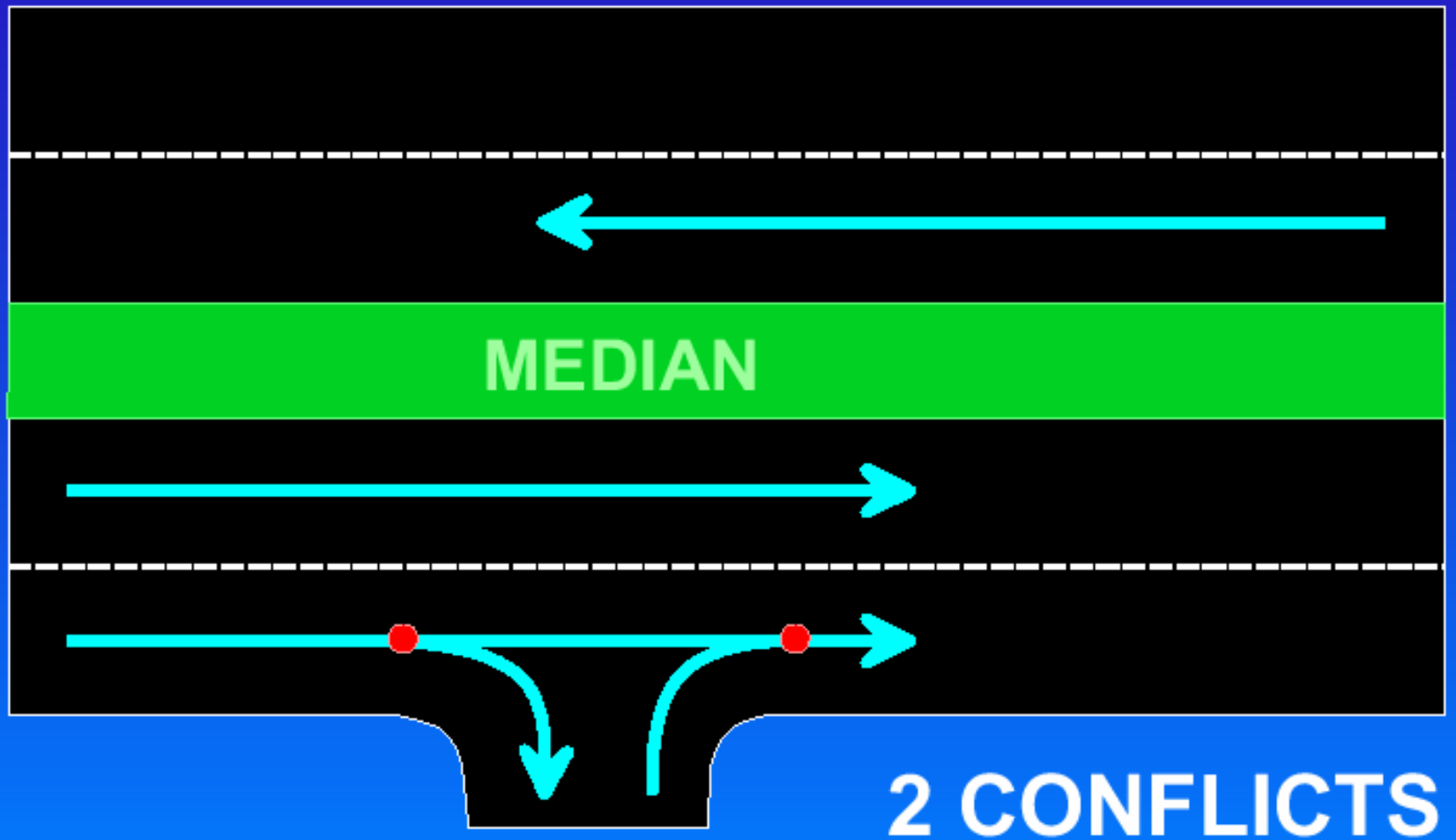
More room for landscaping and pedestrians  
More attractive corridors  
Less asphalt

# FULL MOVEMENT



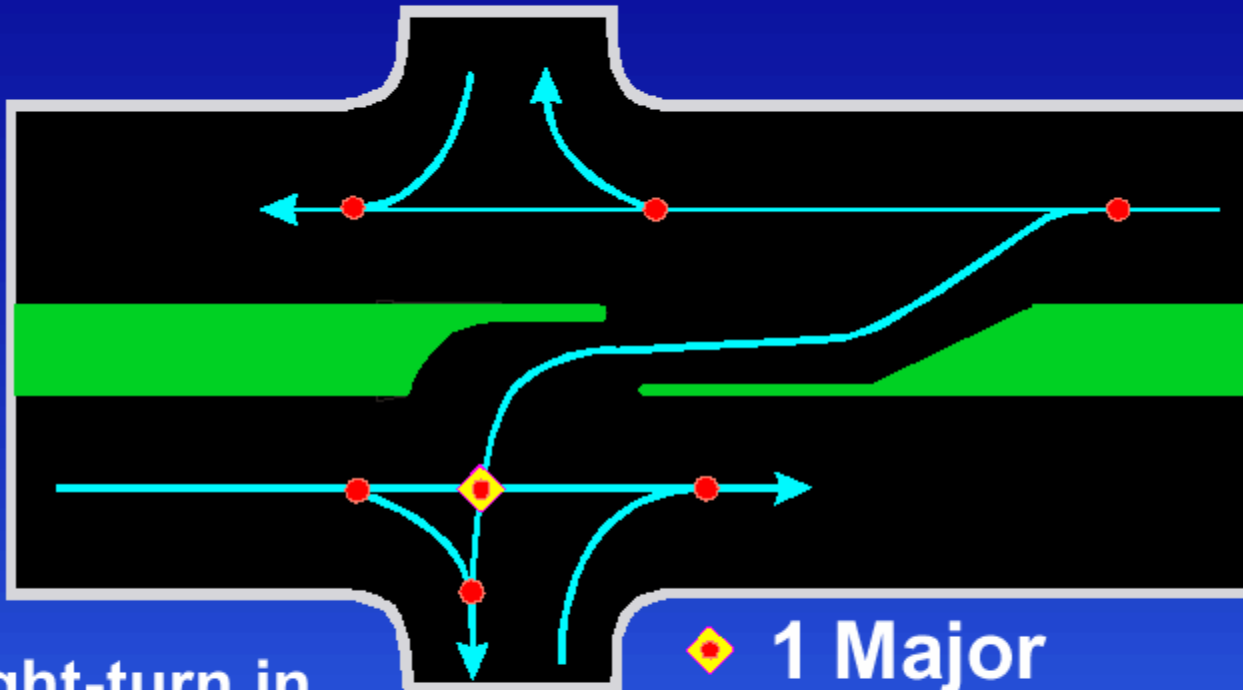
36 CONFLICTS  
22 IF SIGNALIZED

# RIGHT-IN/RIGHT-OUT





# CONFLICTS



Right-turn in  
Right-turn out

- ◆ 1 Major
- 6 Minor

---

**7 CONFLICTS**

# Advantages and Benefits of An Access Management Approach



# Design Feature Applications

- Indirect Left Turn Applications
- Roundabouts
- Dedicated Right Turn Lanes
- Consolidated and Shared Driveways
- Use of FHWA Alternative Intersection Design
- Improved Traffic Timing
- Use of Reverse Frontage

# Benefits

- Significant Reduction in Crashes
- Reduction in Delay and Fewer Stopped Vehicles
- Increased Capacity Versus Existing Design
- Minimal Right-of-Way Purchase
- Significant Reduction in Construction Cost Versus Grade Separation or Lane Widening

# Benefits

- Lower Maintenance Cost
- Preserves and Enhances Access to Businesses
- Improves Evacuation Capabilities
- Preserves Historic Views

# Design Principles

- Consistent With VDOT's Access Management Principles
- Consistent With VDOT's Effort to Implement Roundabouts
- Provides Acceptable Level of Service for the 20+ Year Design Horizon
- Lowers Corridor Speed to 45 MPH